
MANUAL BÁSICO

LINEAS DE INFLUENCIA EN PUENTES

CON SAP2000 v.14 (4 EJEMPLOS)

Elaborado y presentado por:

César Jesús Díaz Coronel

Estudiante Ing. Civil UNPRG

cjcody_16@hotmail.com



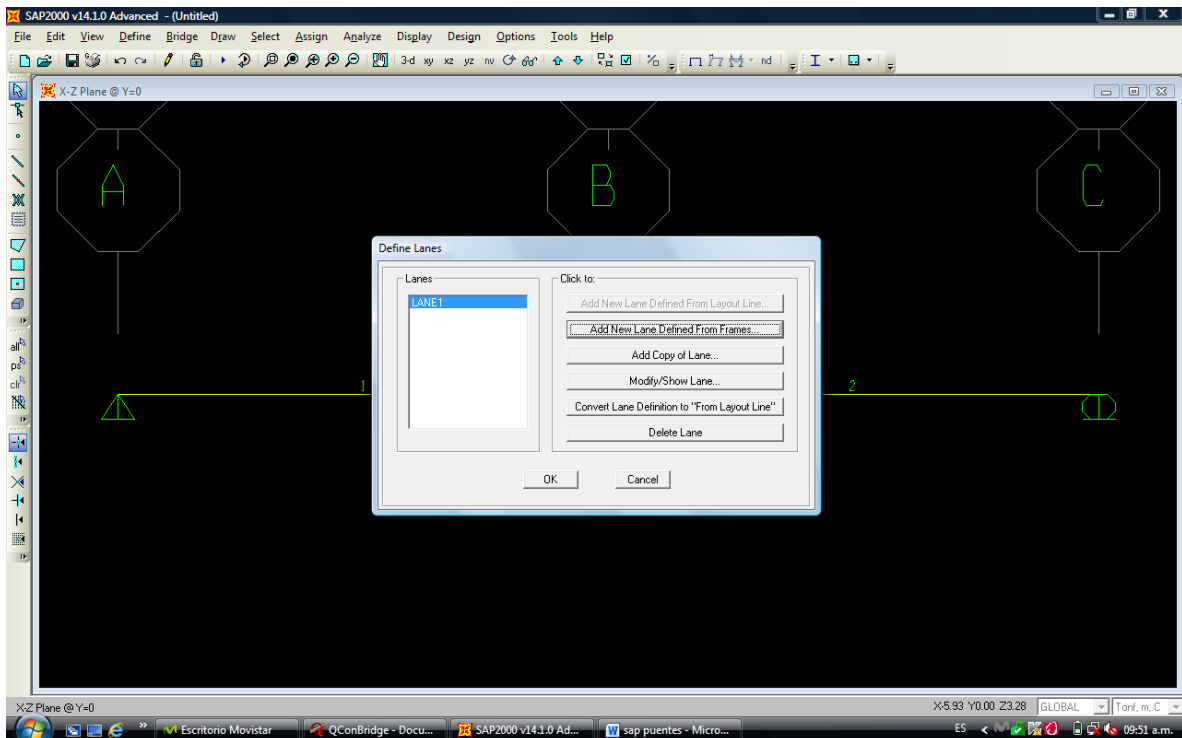
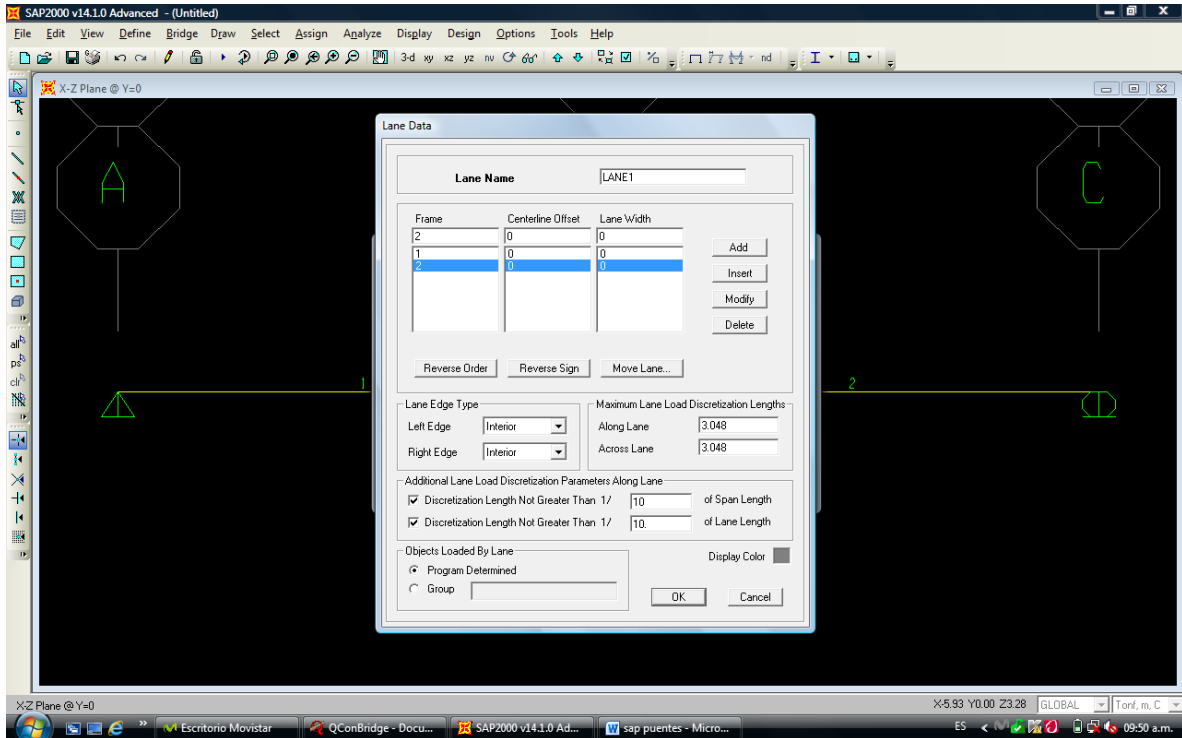
www.ingcivilcjcody.jimdo.com

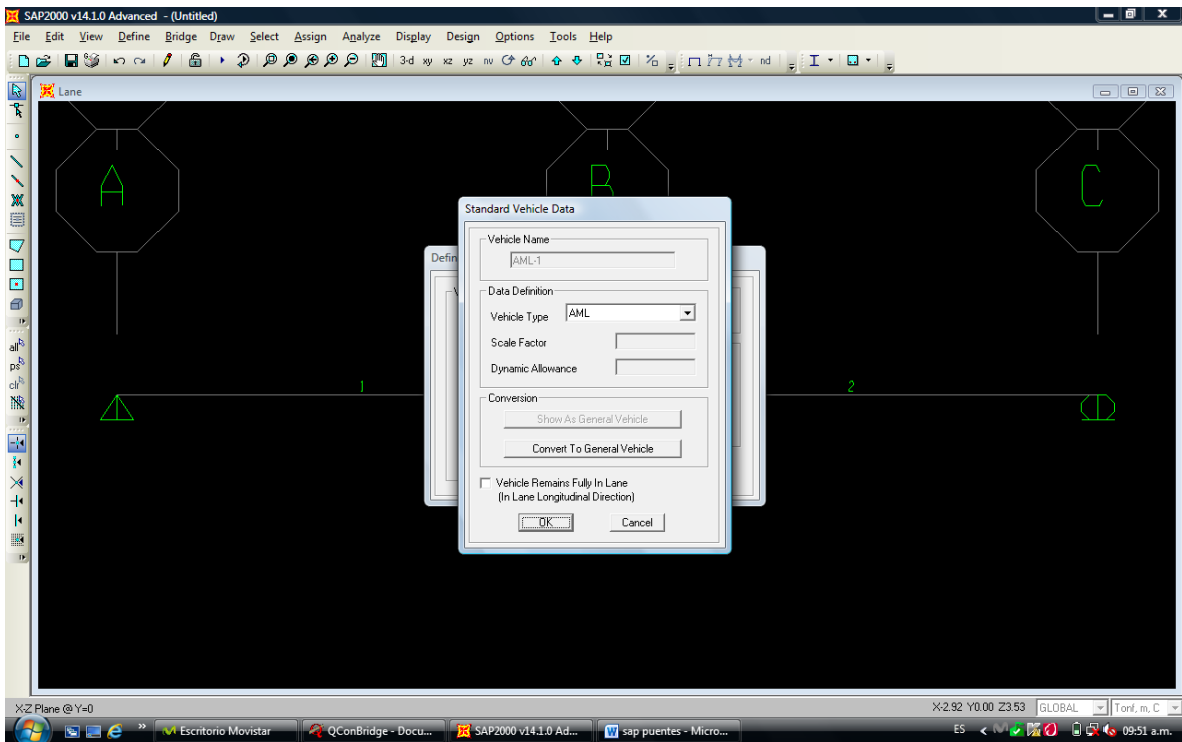
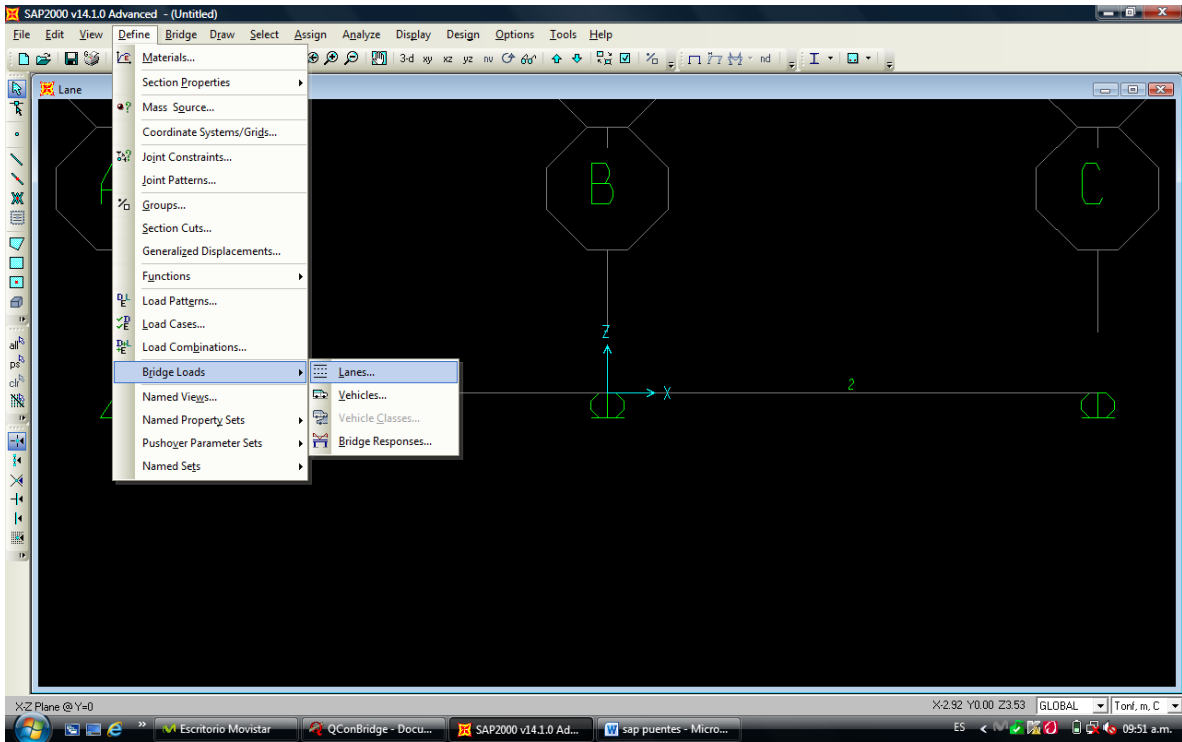
**Comunidad de Ingeniería Civil y
Gerencia de Recursos**

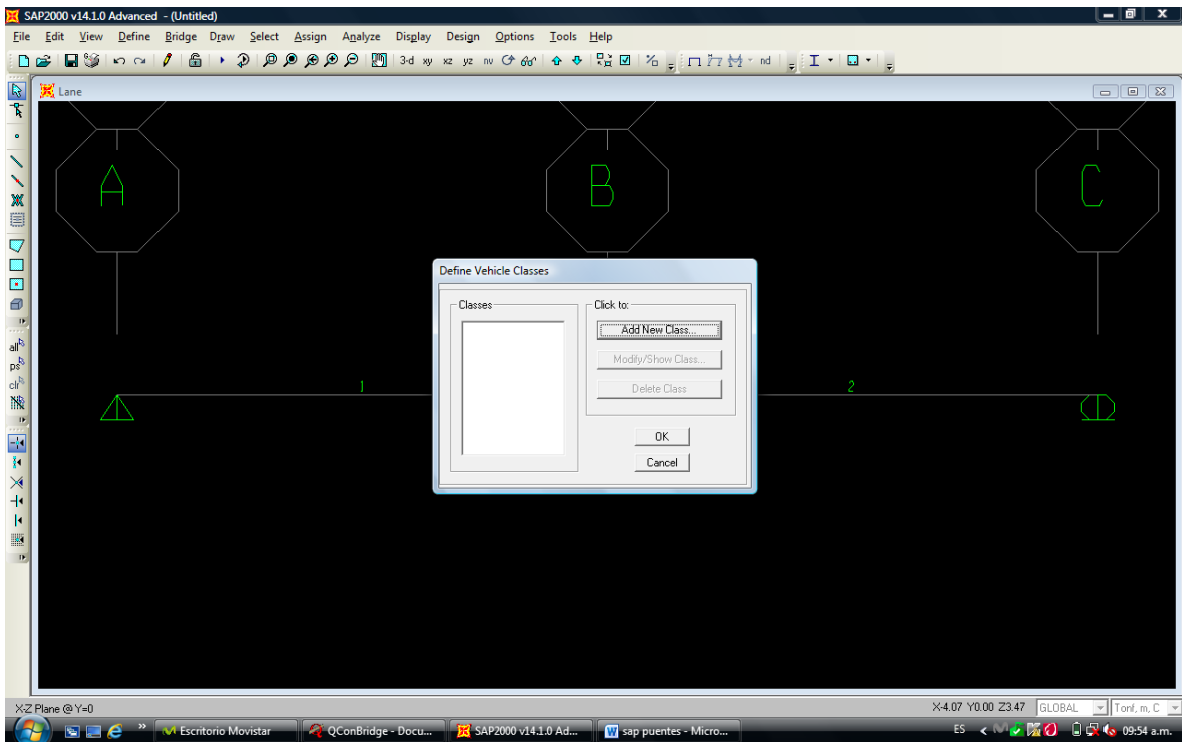
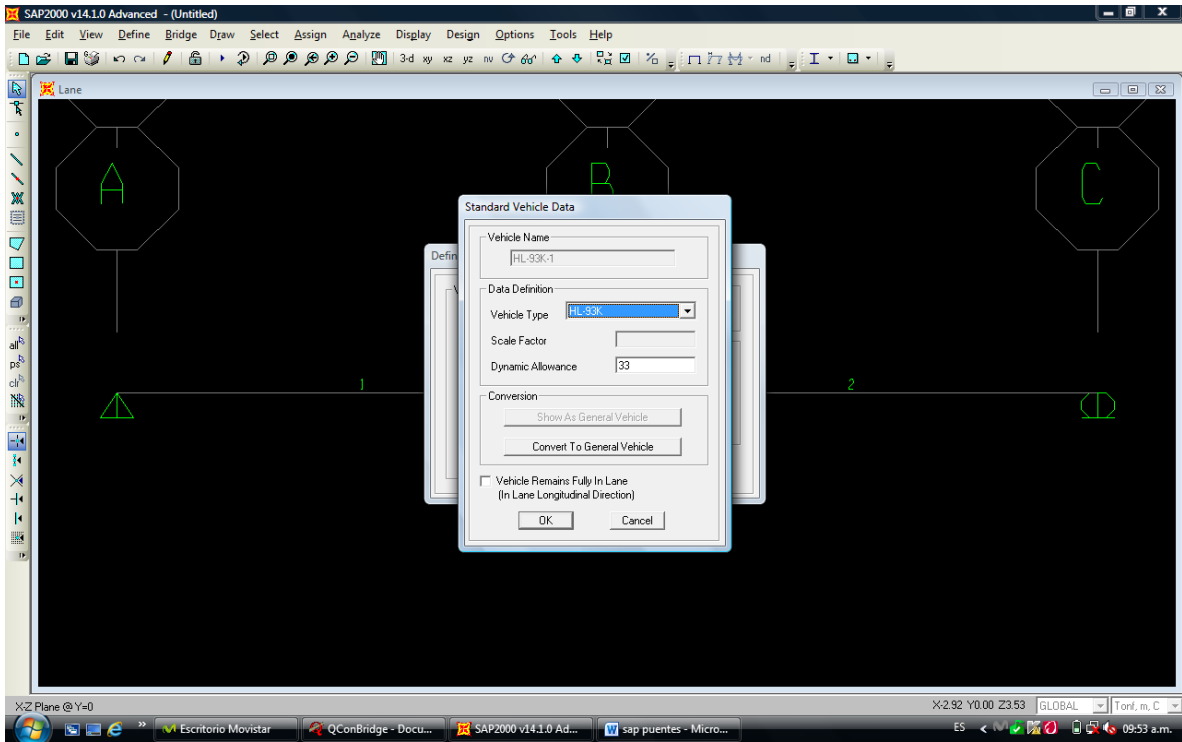
Lambayeque – Perú
Mayo 2012

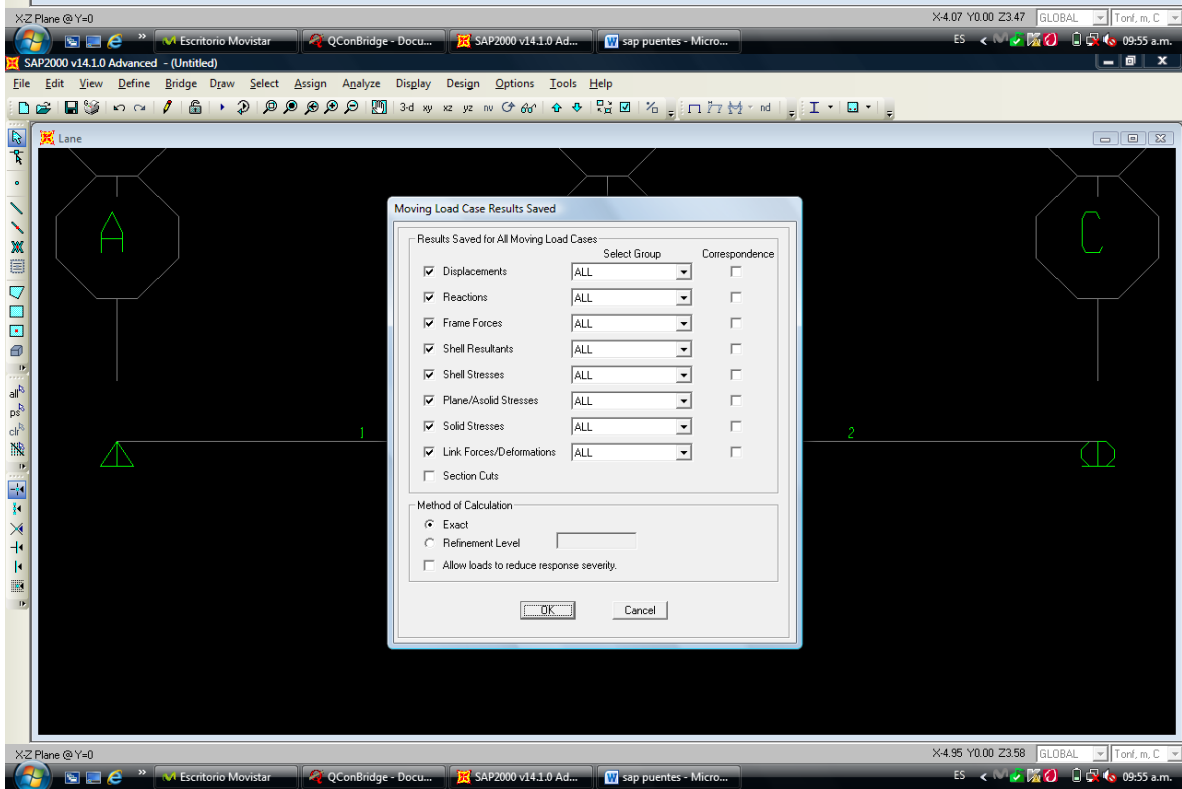
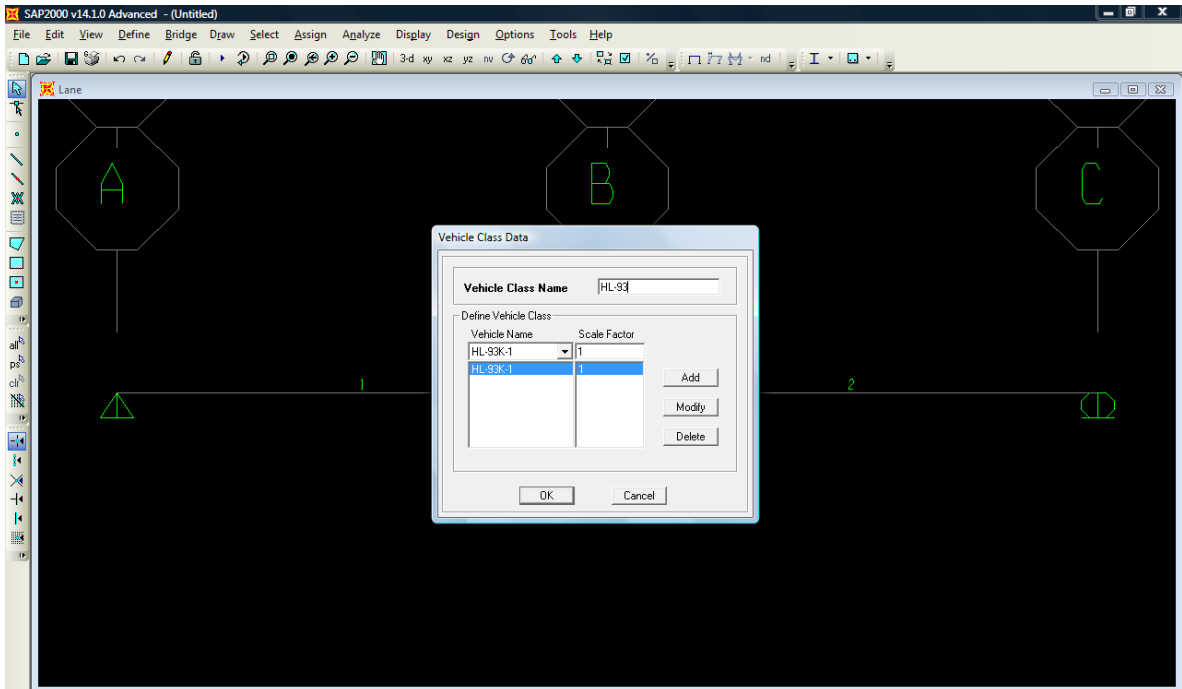
Cambiamos unidades

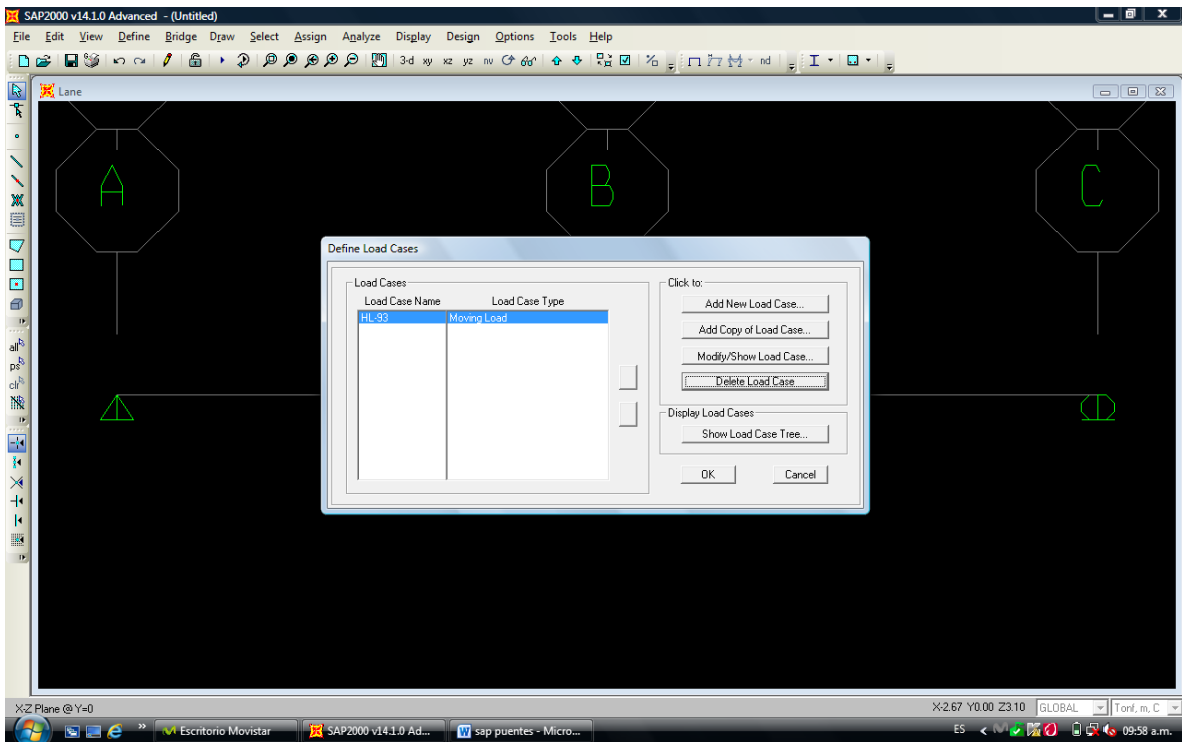
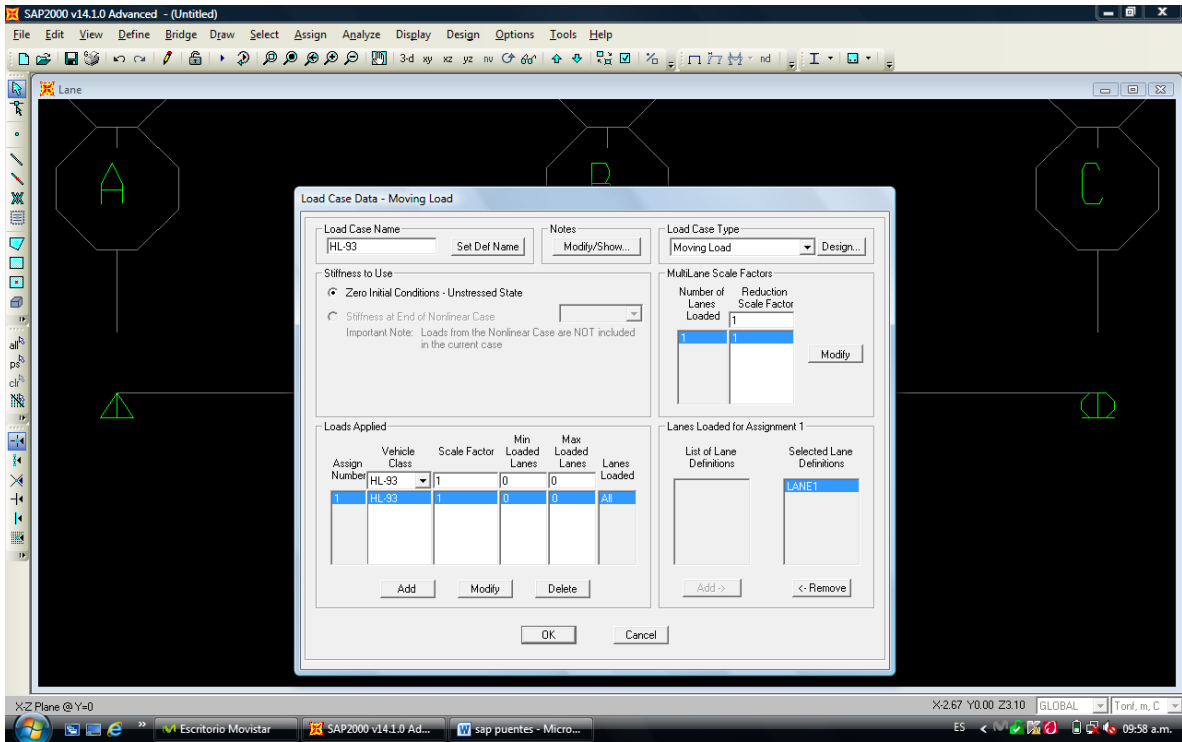
Una viga



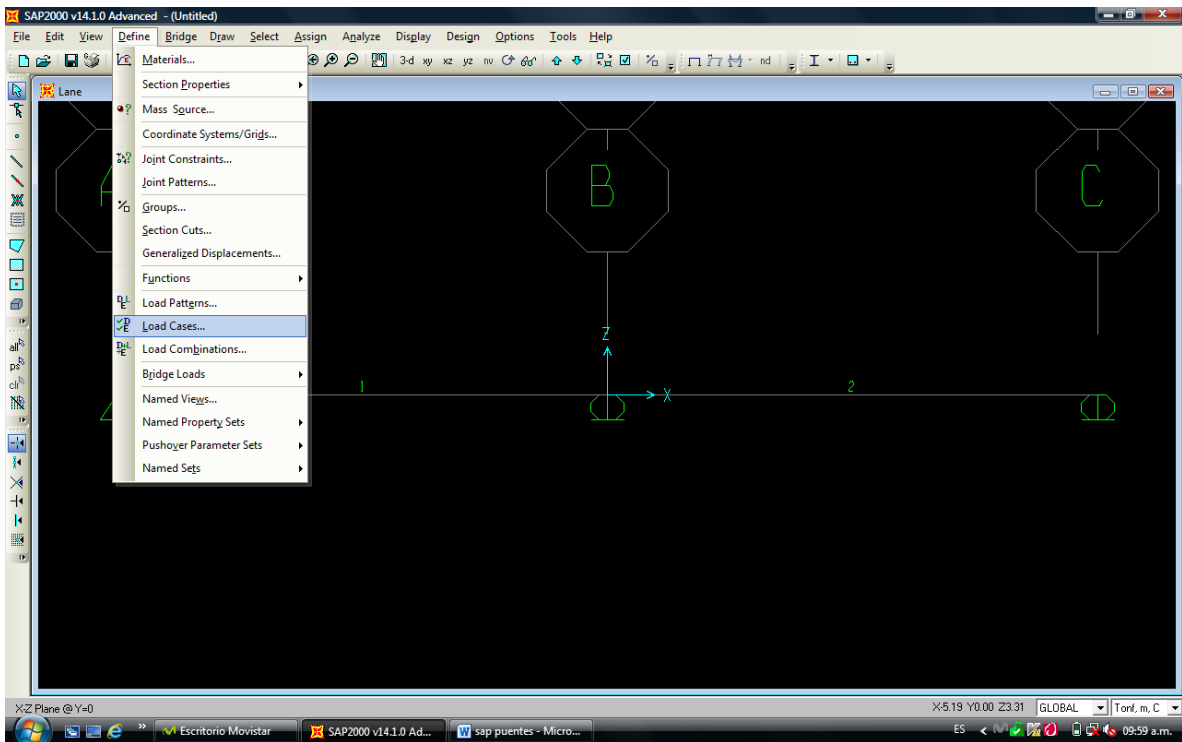
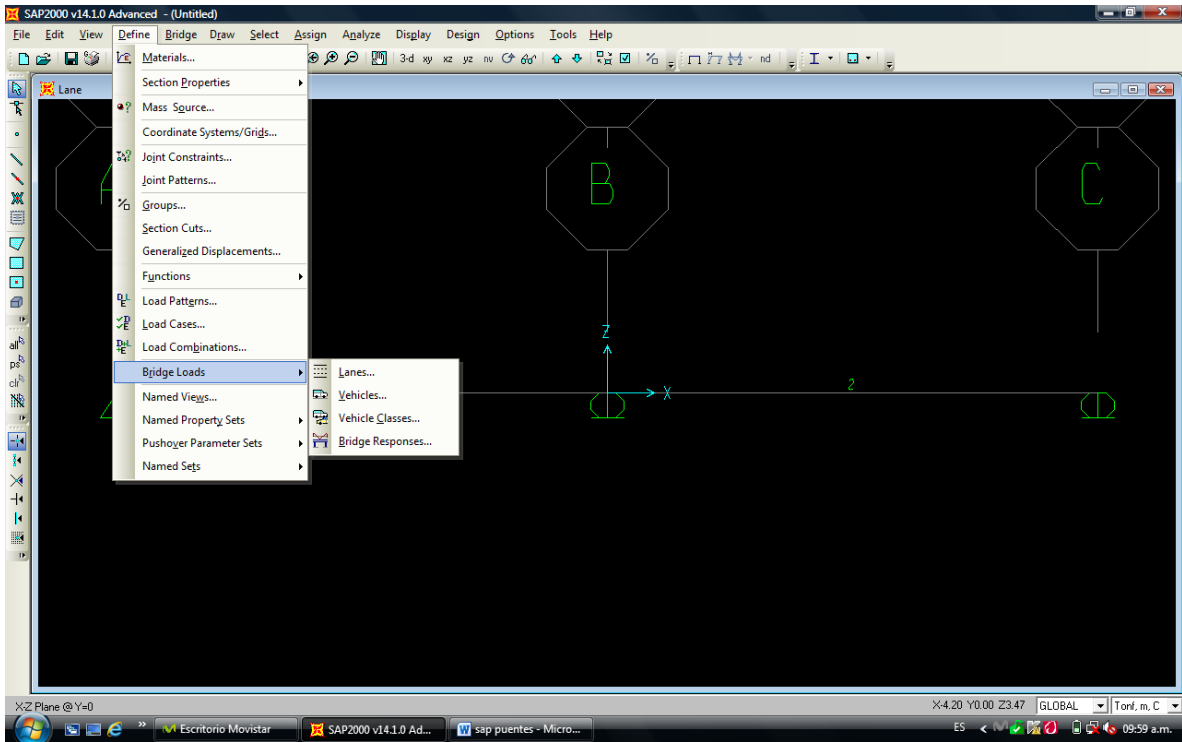


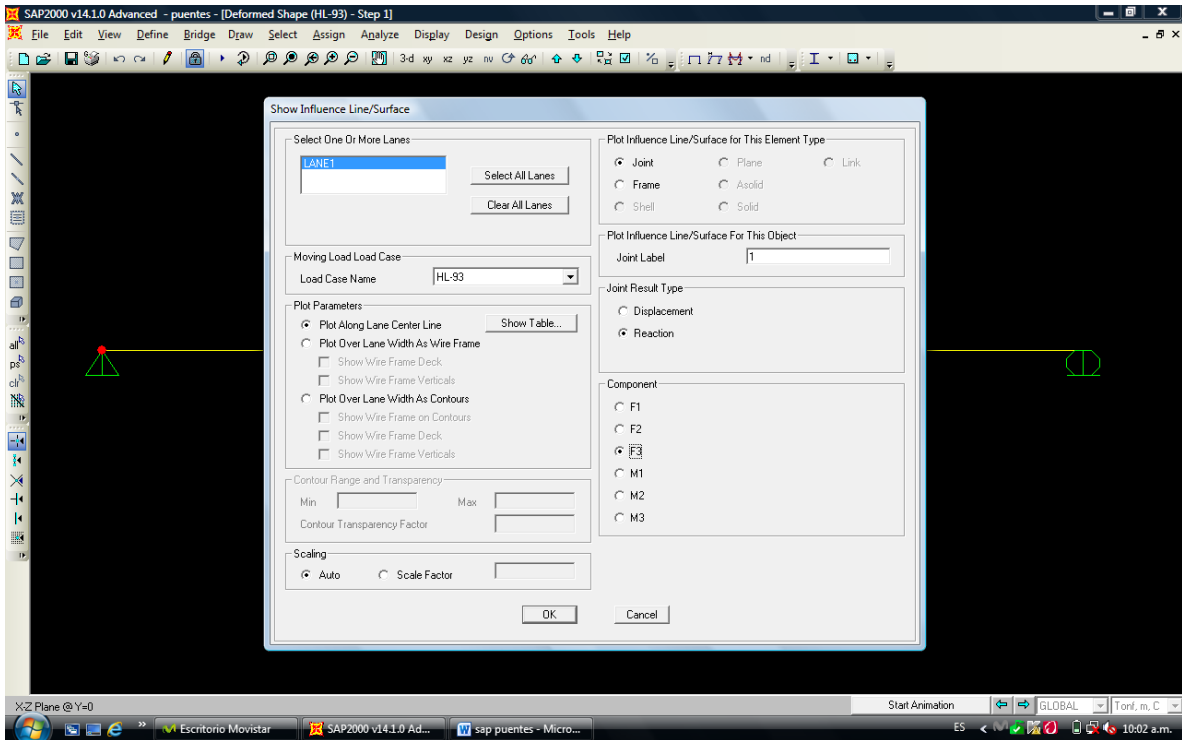
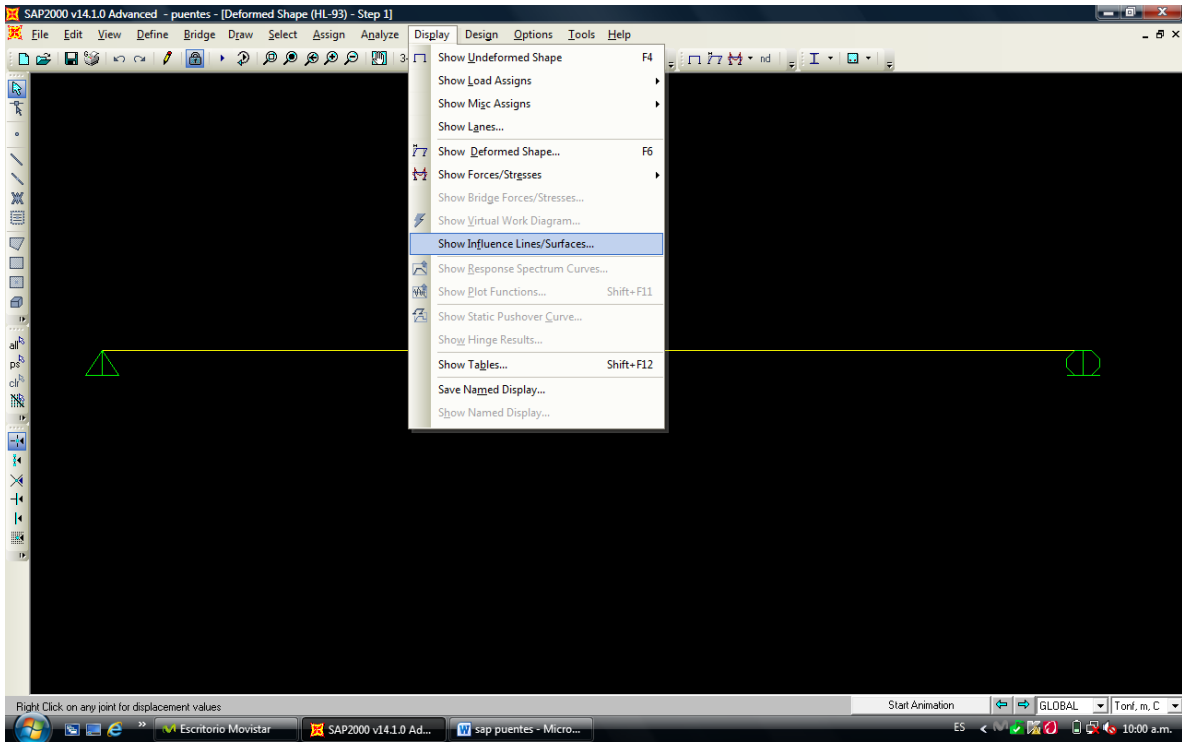


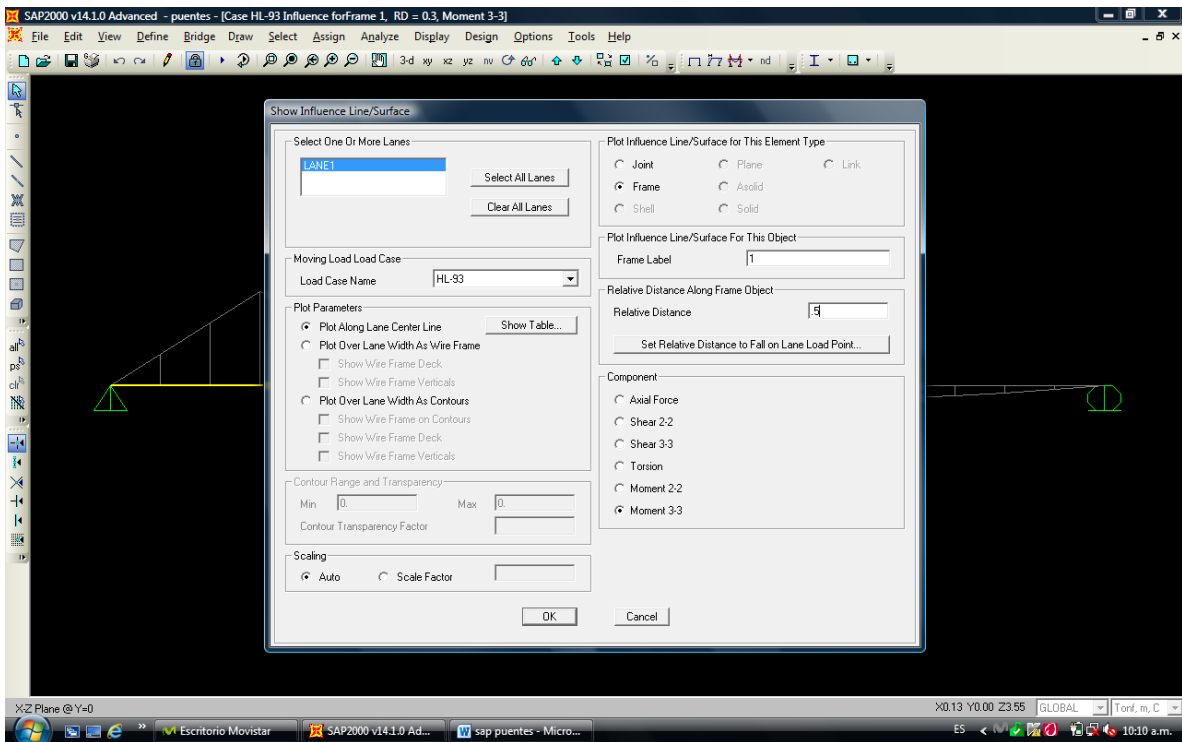
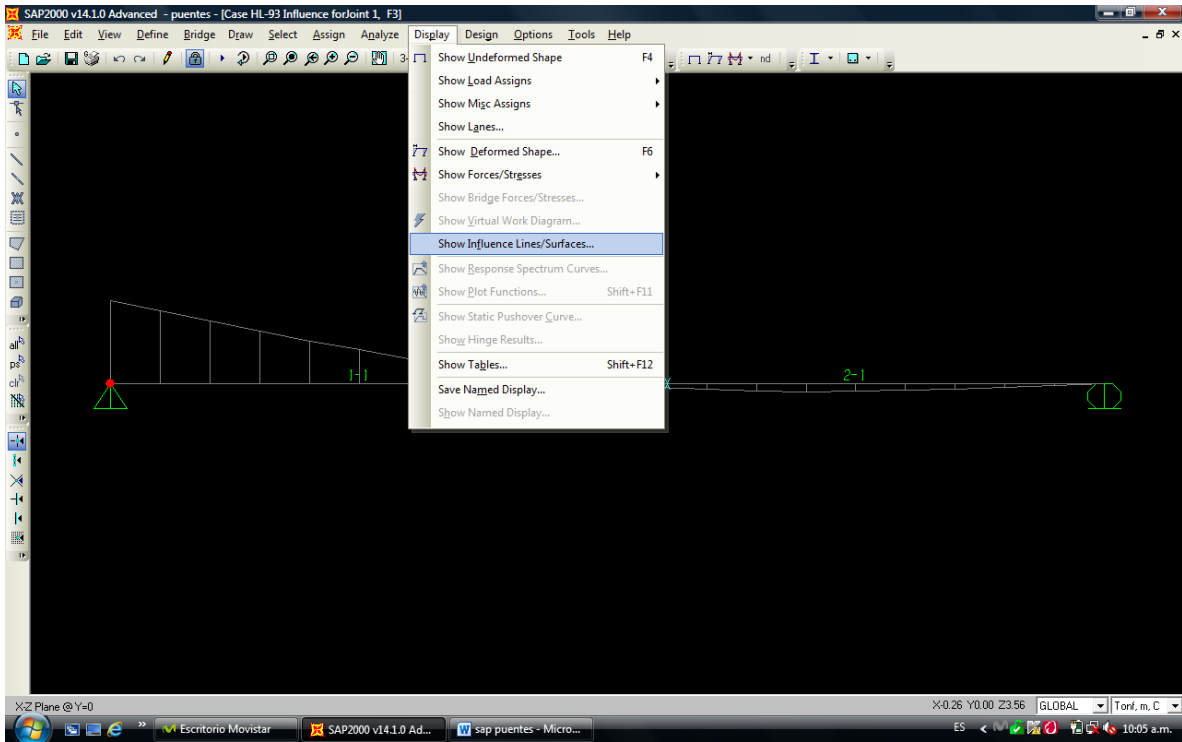


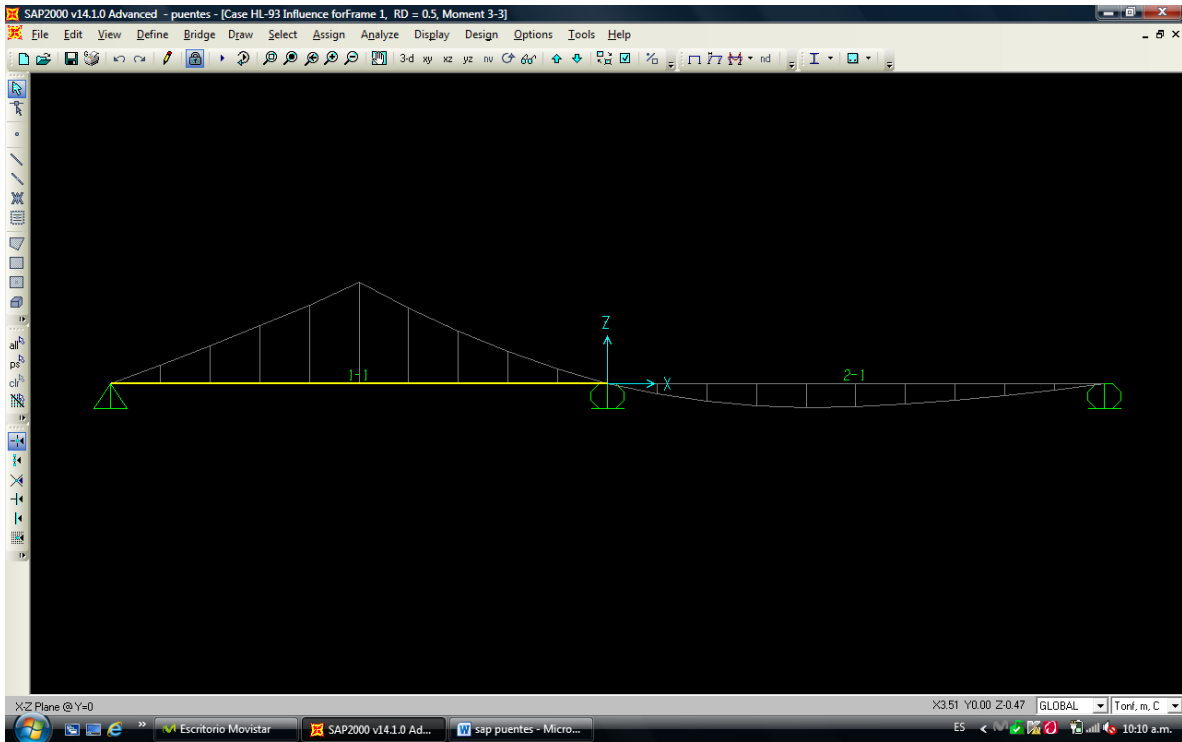


Dos menus

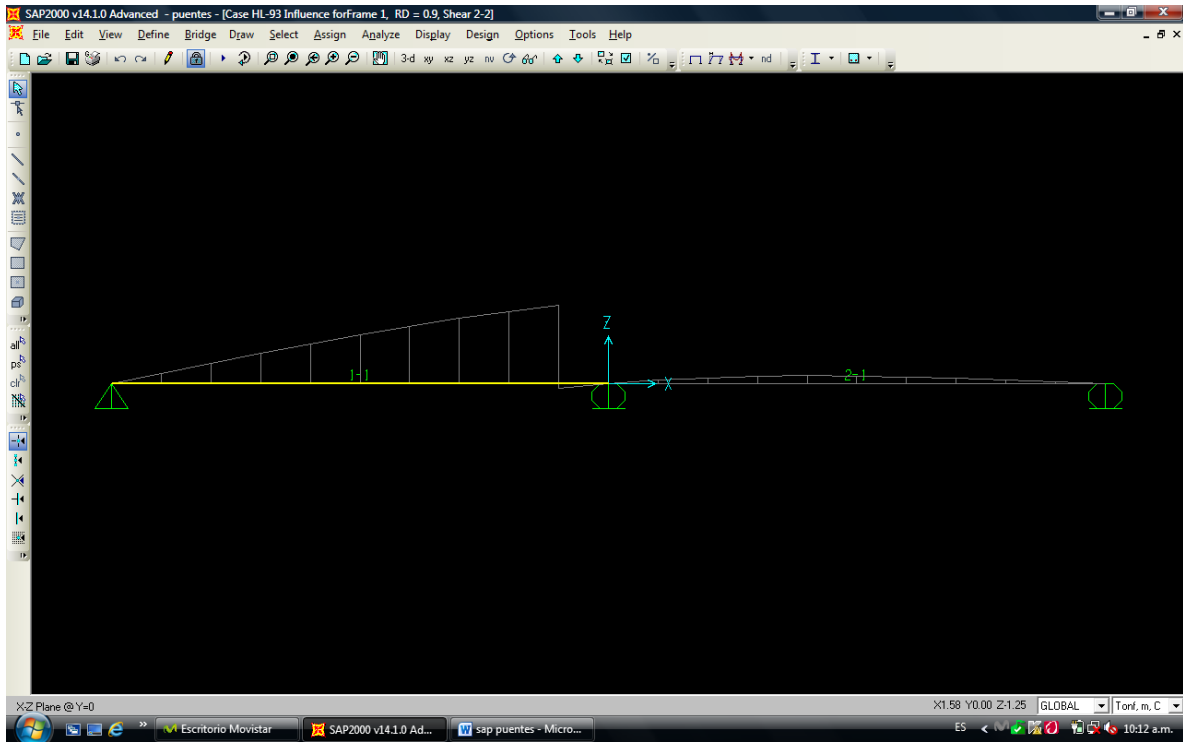




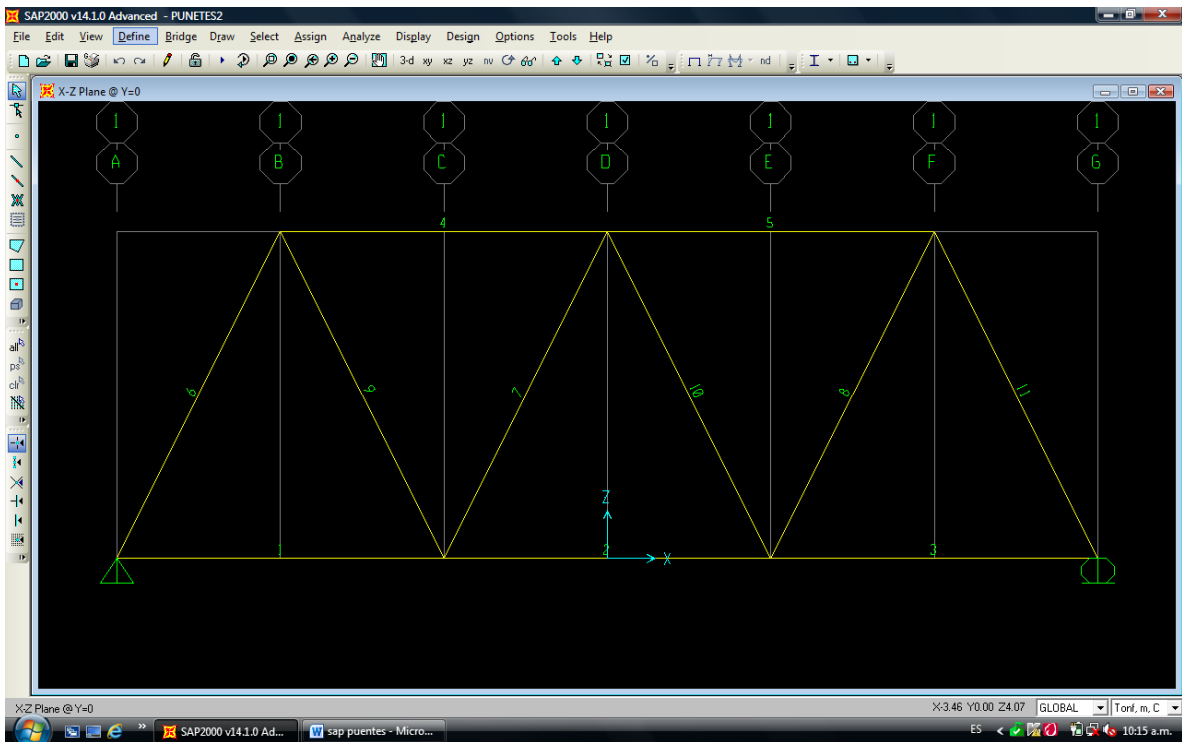
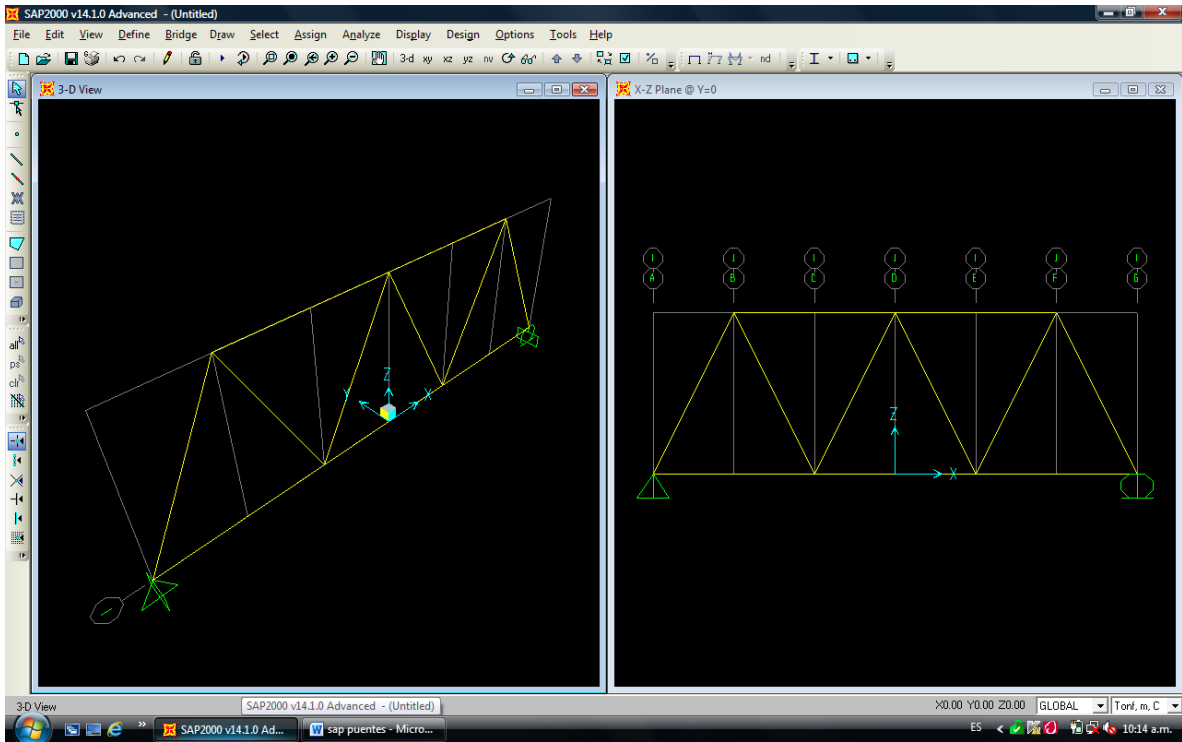




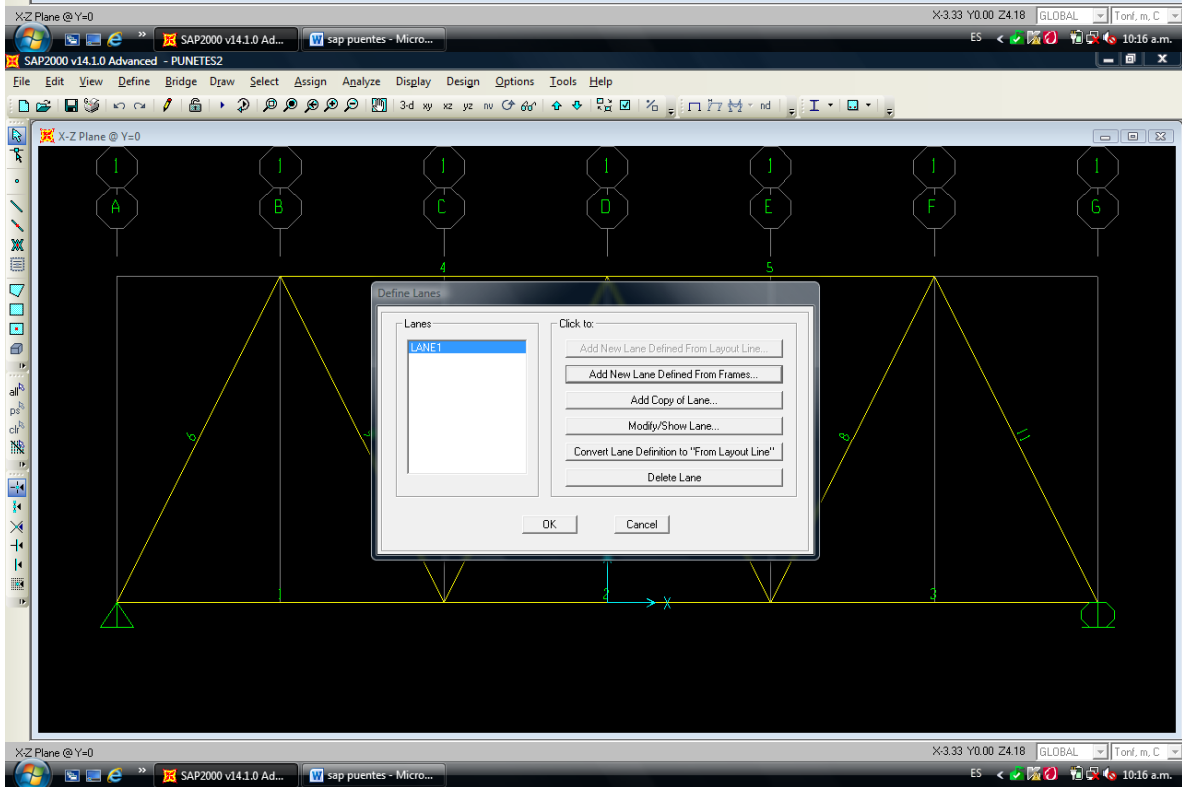
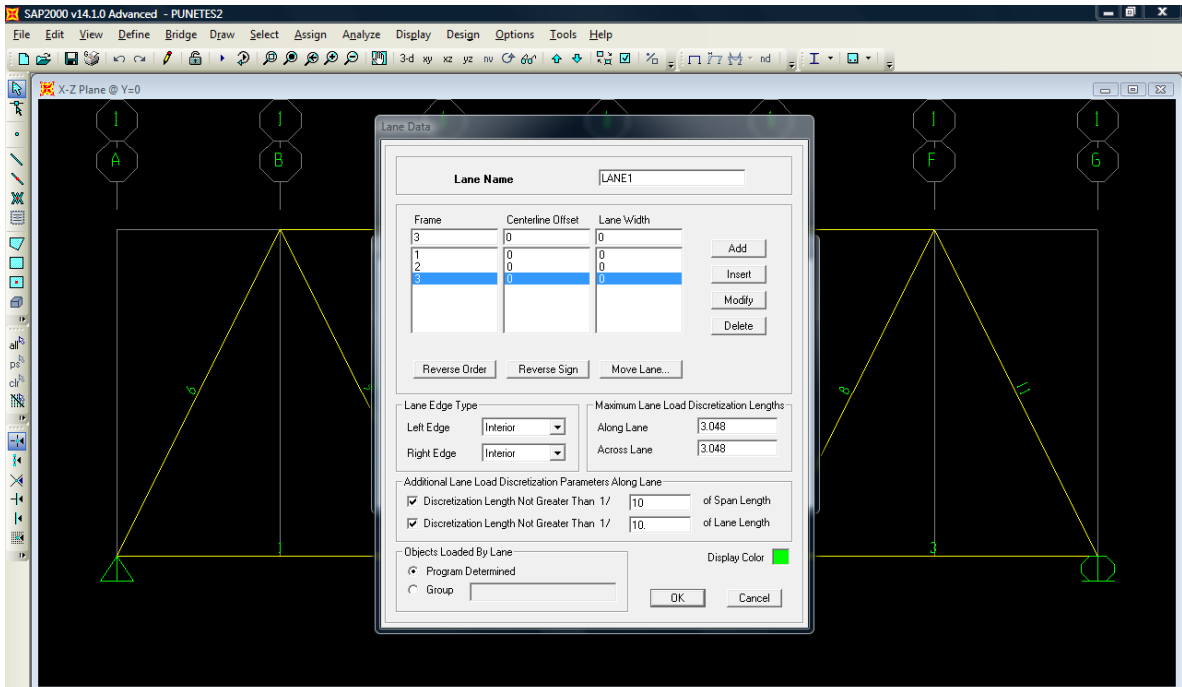
Show Influence Line/Surface
 Select One Or More Lanes: LANE1 (Select All Lanes, Clear All Lanes)
 Plot Influence Line/Surface for This Element Type: Frame, Joint, Plane, Link, Shell, Solid
 Plot Influence Line/Surface For This Object: Frame Label: 1
 Moving Load Load Case: Load Case Name: HL-93
 Plot Parameters: Plot Along Lane Center Line (Show Table...), Plot Over Lane Width As Wire Frame (Show Wire Frame Deck, Show Wire Frame Verticals), Plot Over Lane Width As Contours (Show Wire Frame on Contours, Show Wire Frame Deck, Show Wire Frame Verticals)
 Contour Range and Transparency: Min: 0, Max: 0, Contour Transparency Factor:
 Scaling: Auto, Scale Factor:
 Component: Axial Force, Shear 2-2, Shear 3-3, Torsion, Moment 2-2, Moment 3-3
 Relative Distance Along Frame Object: Relative Distance: 0.9 (Set Relative Distance to Fall on Lane Load Point...)
 OK Cancel

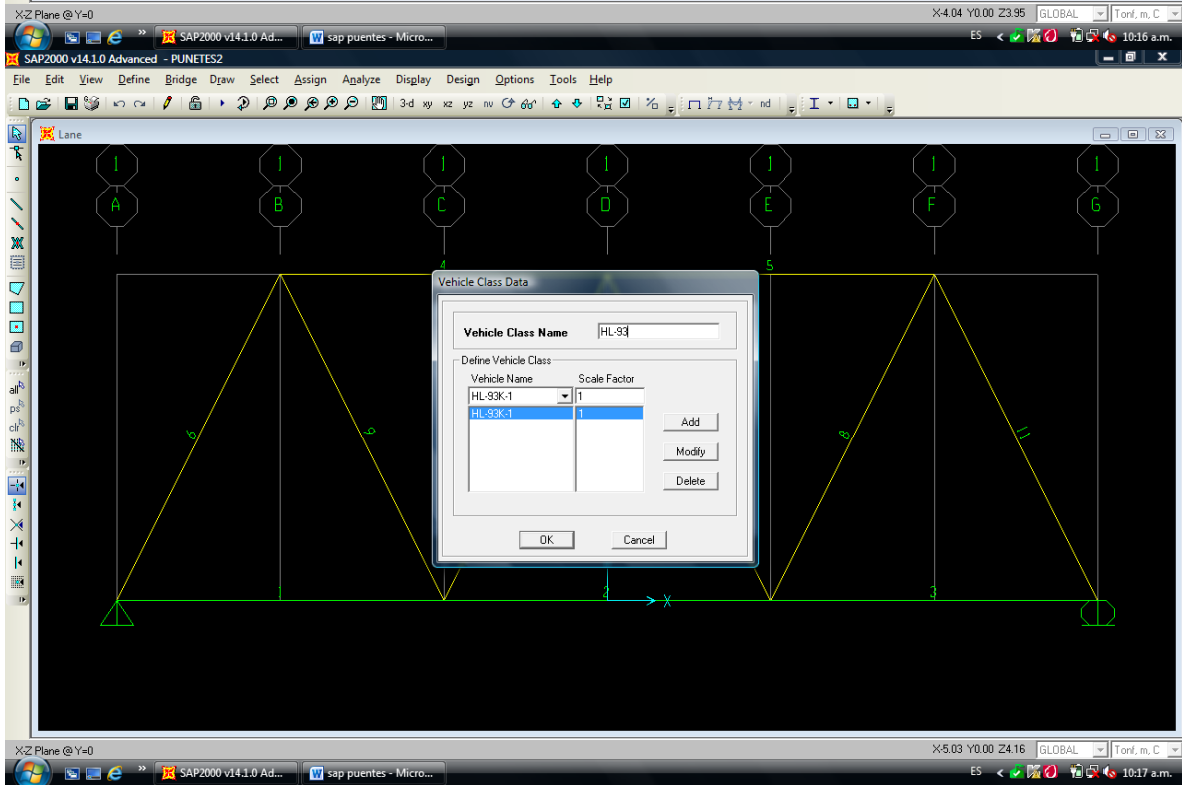
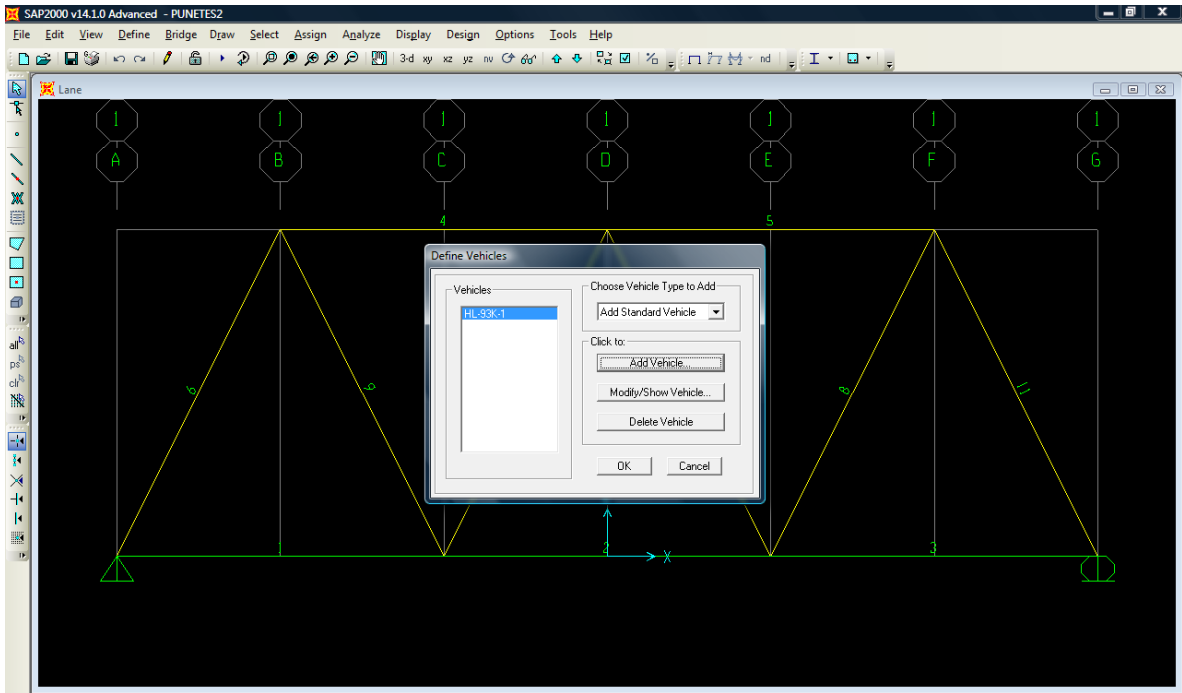


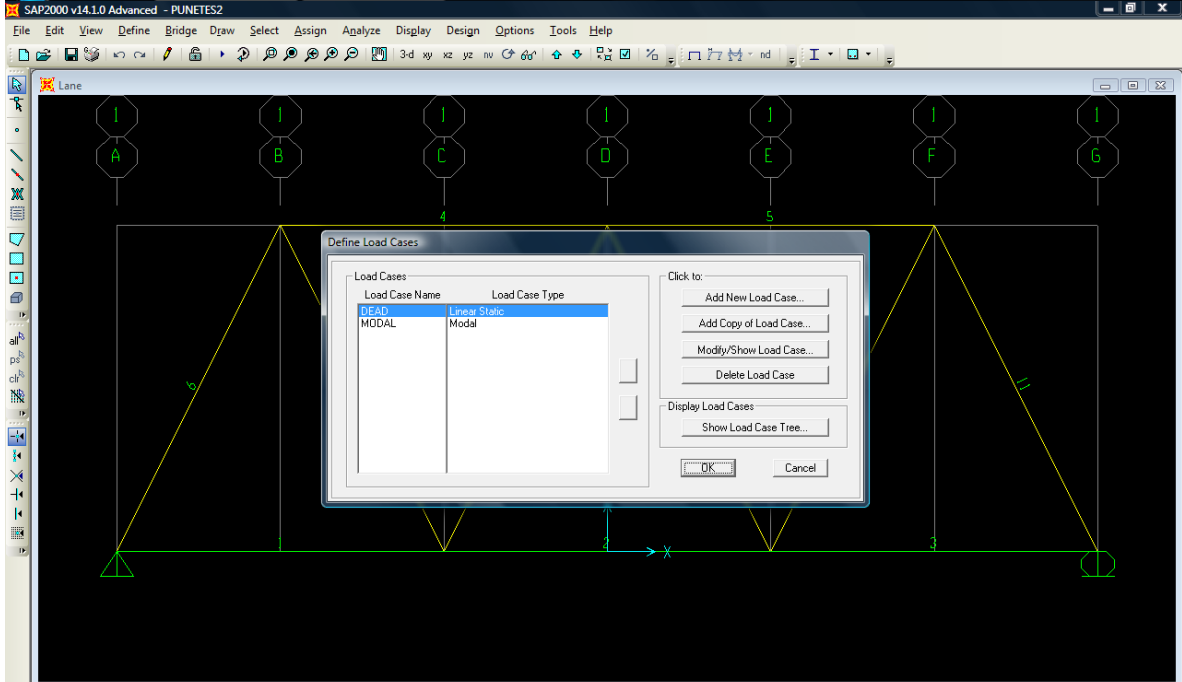
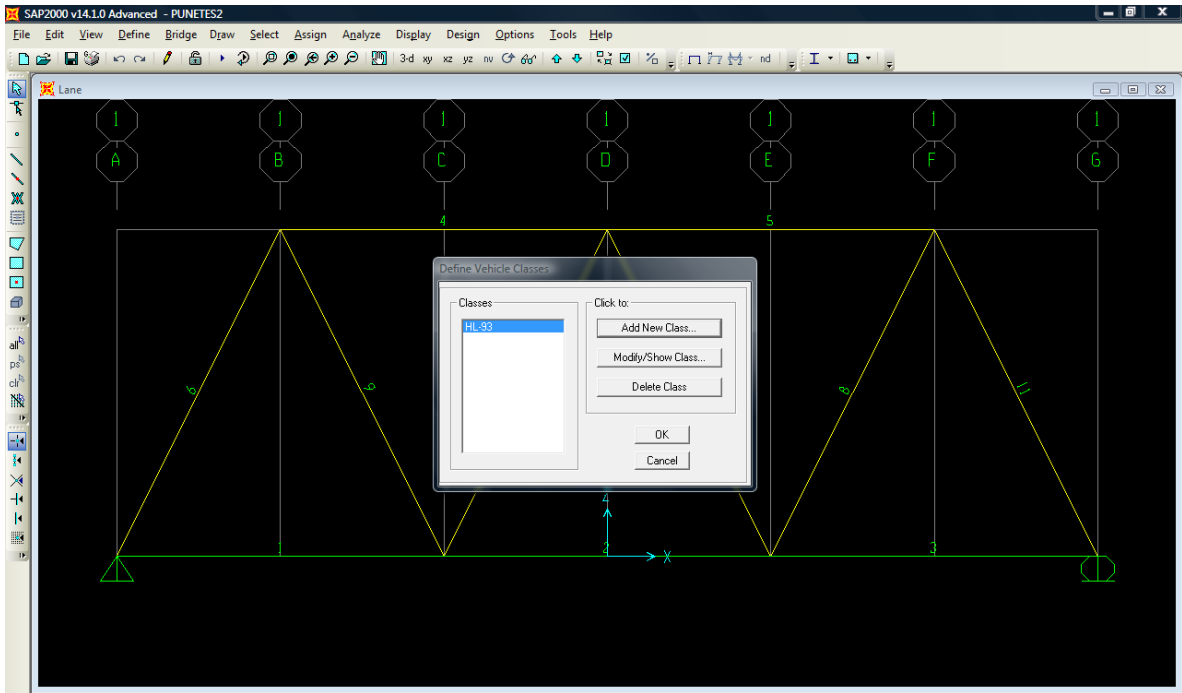
EN ARMADURAS

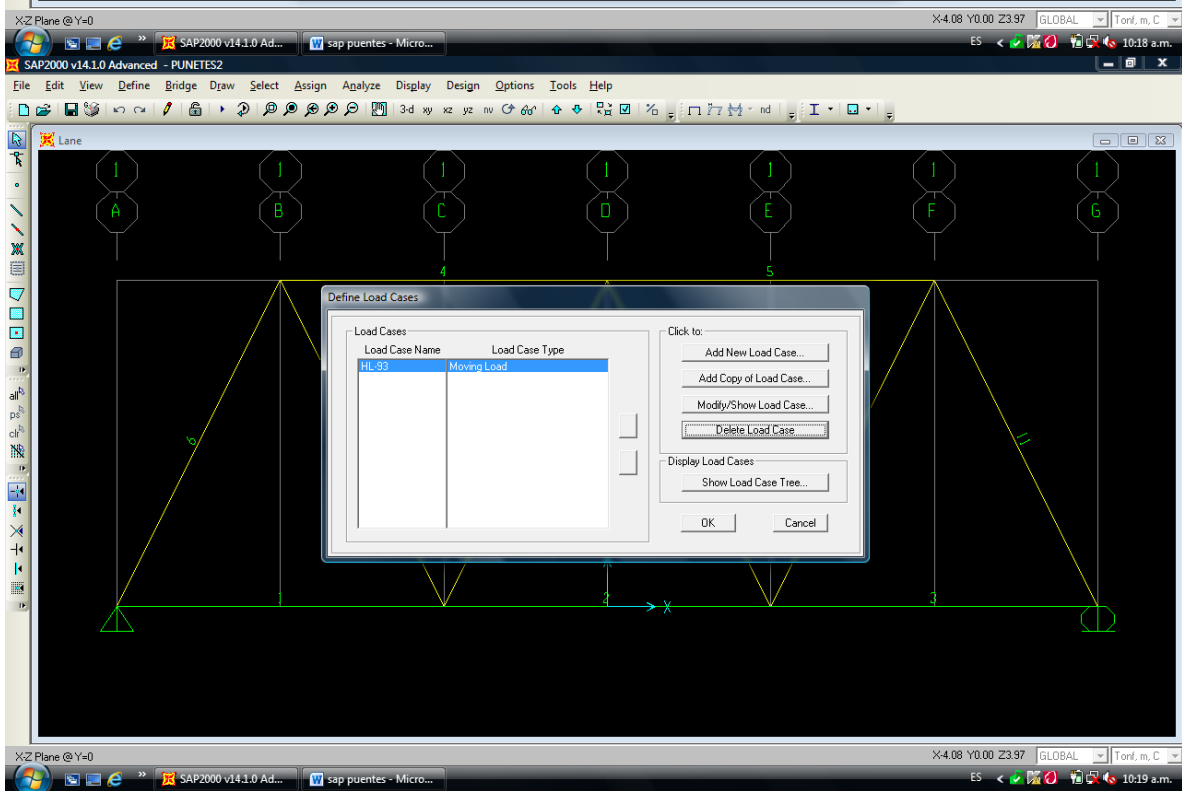
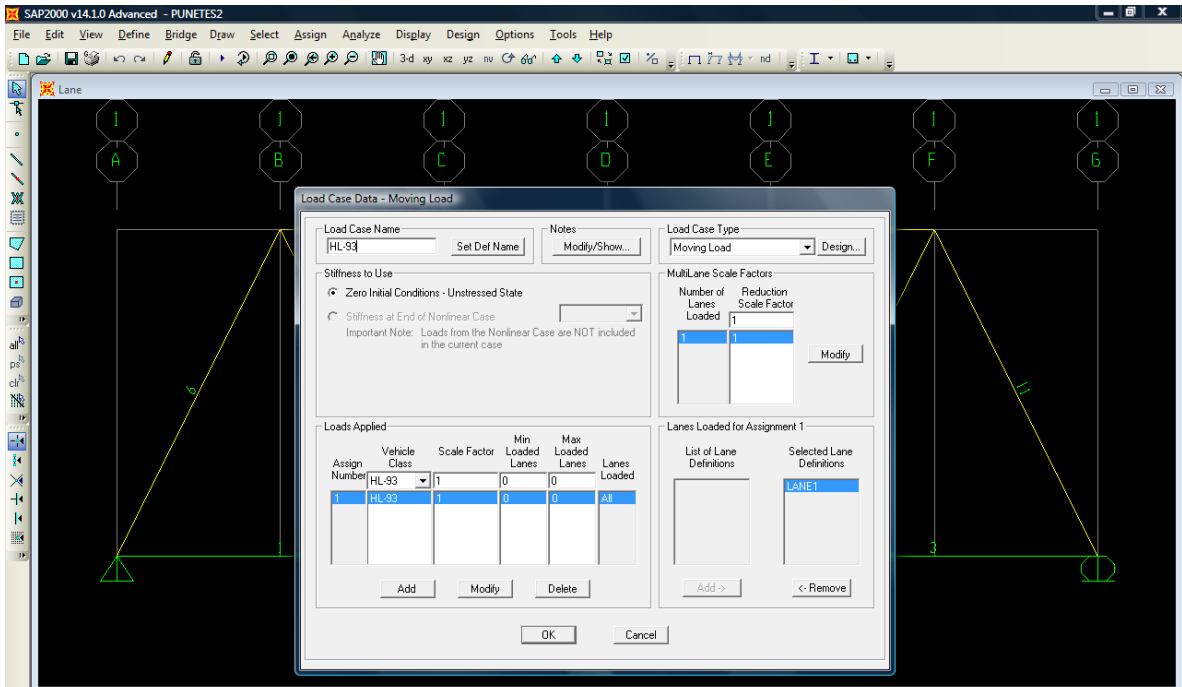


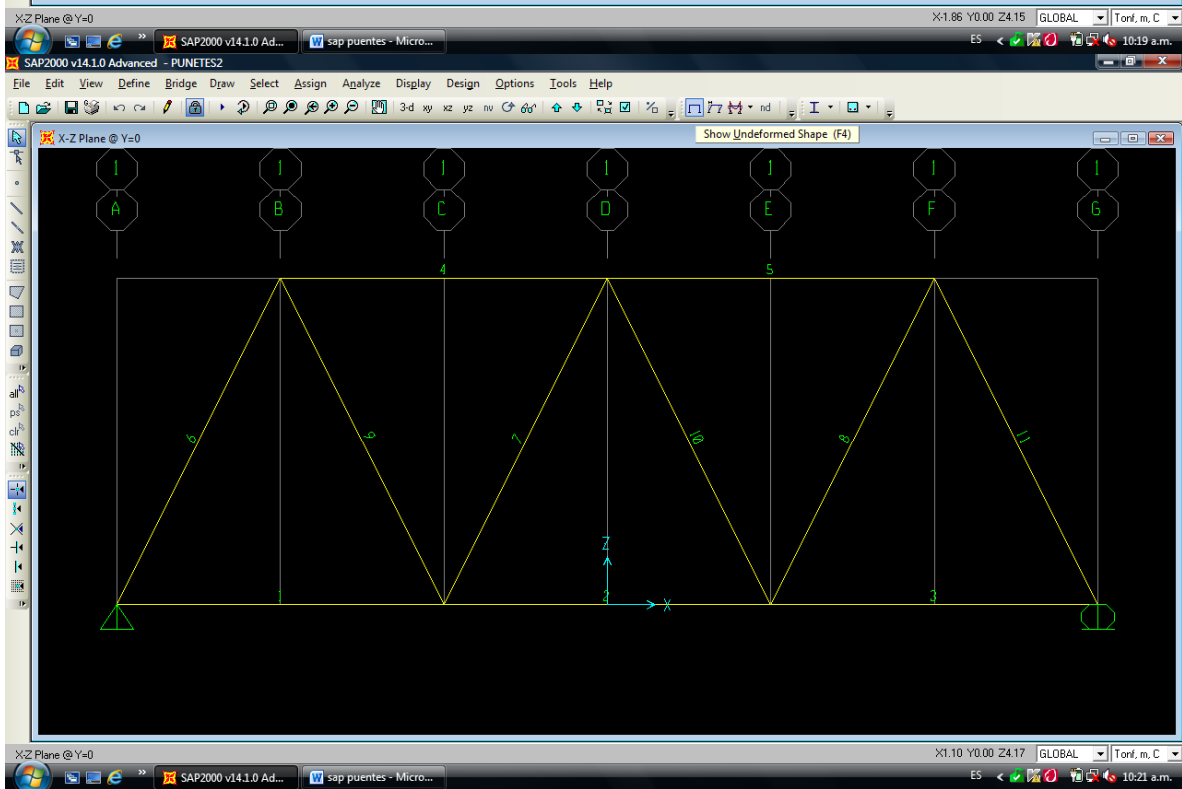
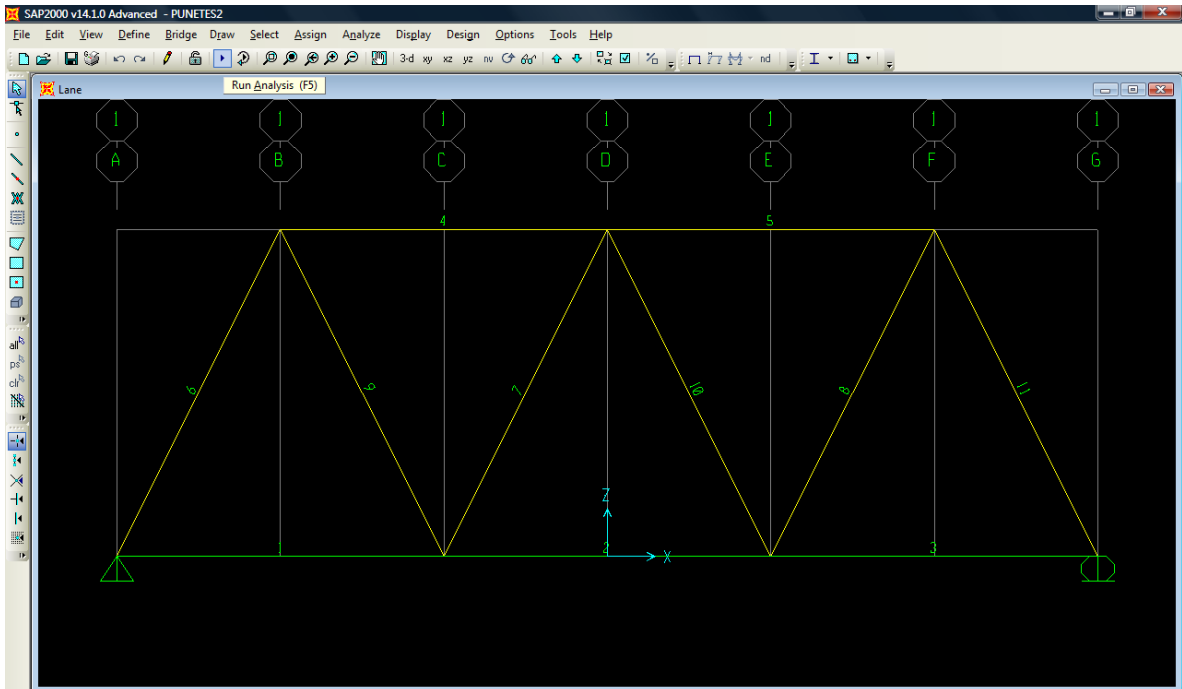
VIA CIRCULO POR TRAMO 1 2 Y 3

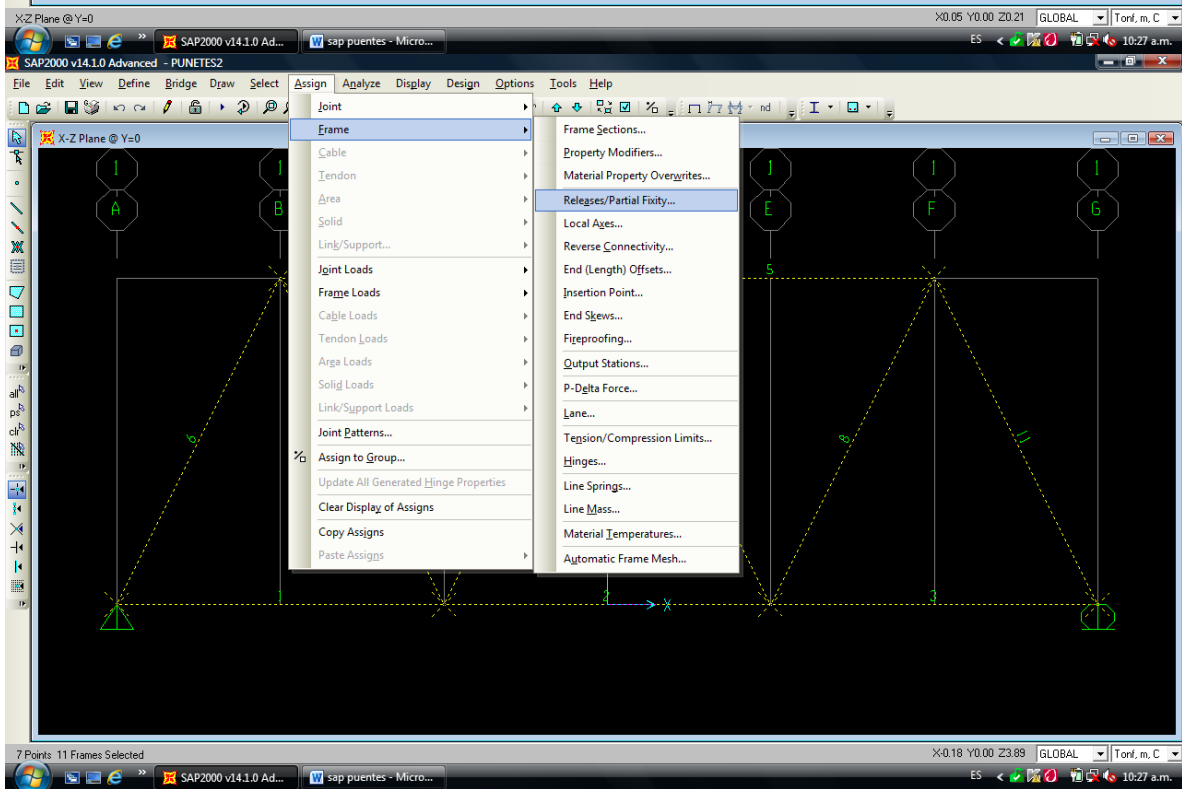
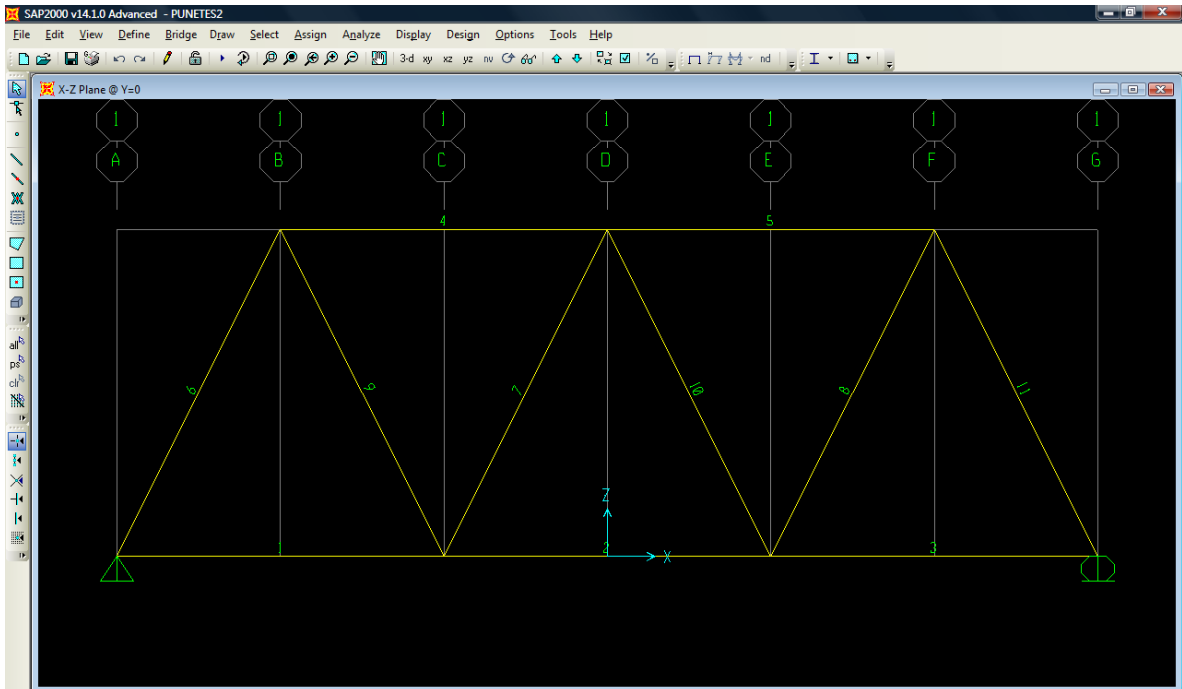


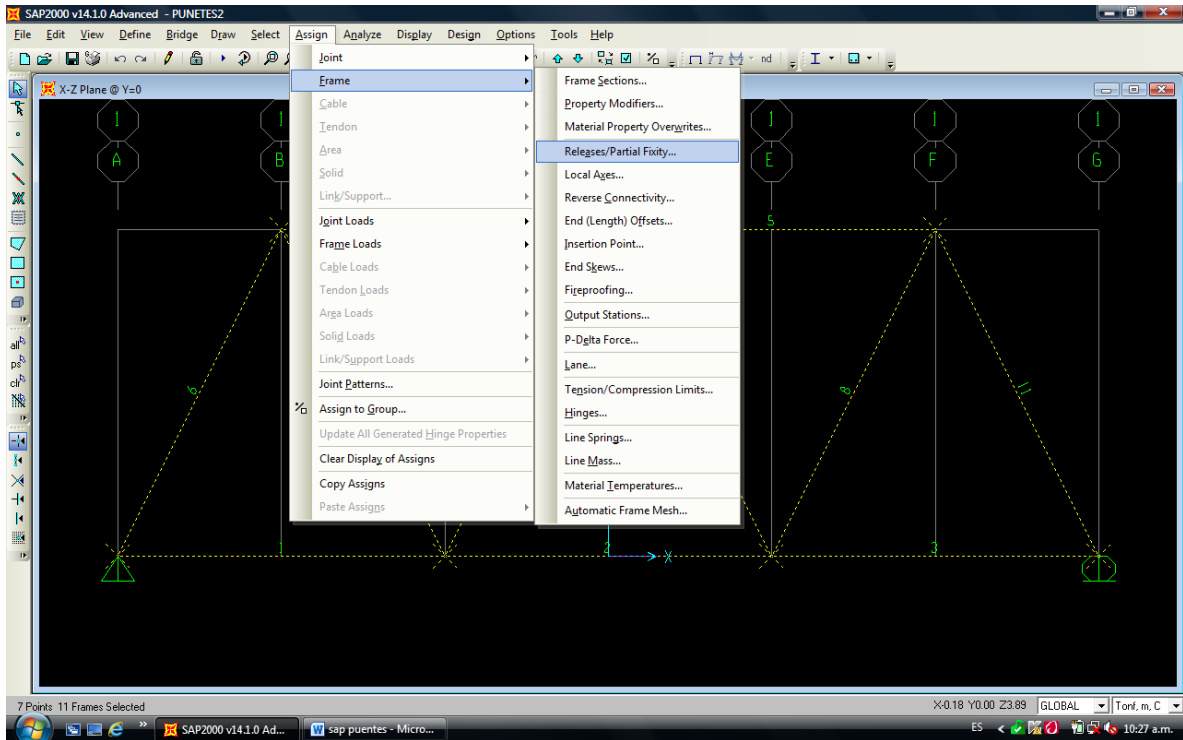






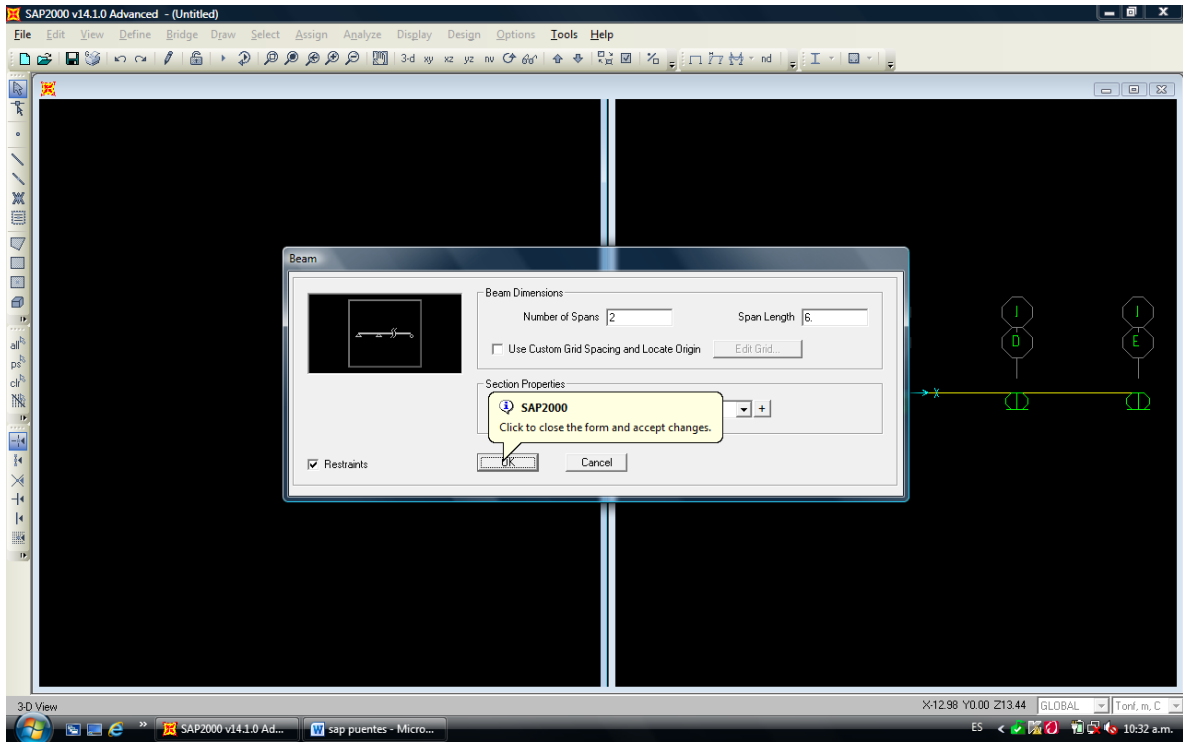


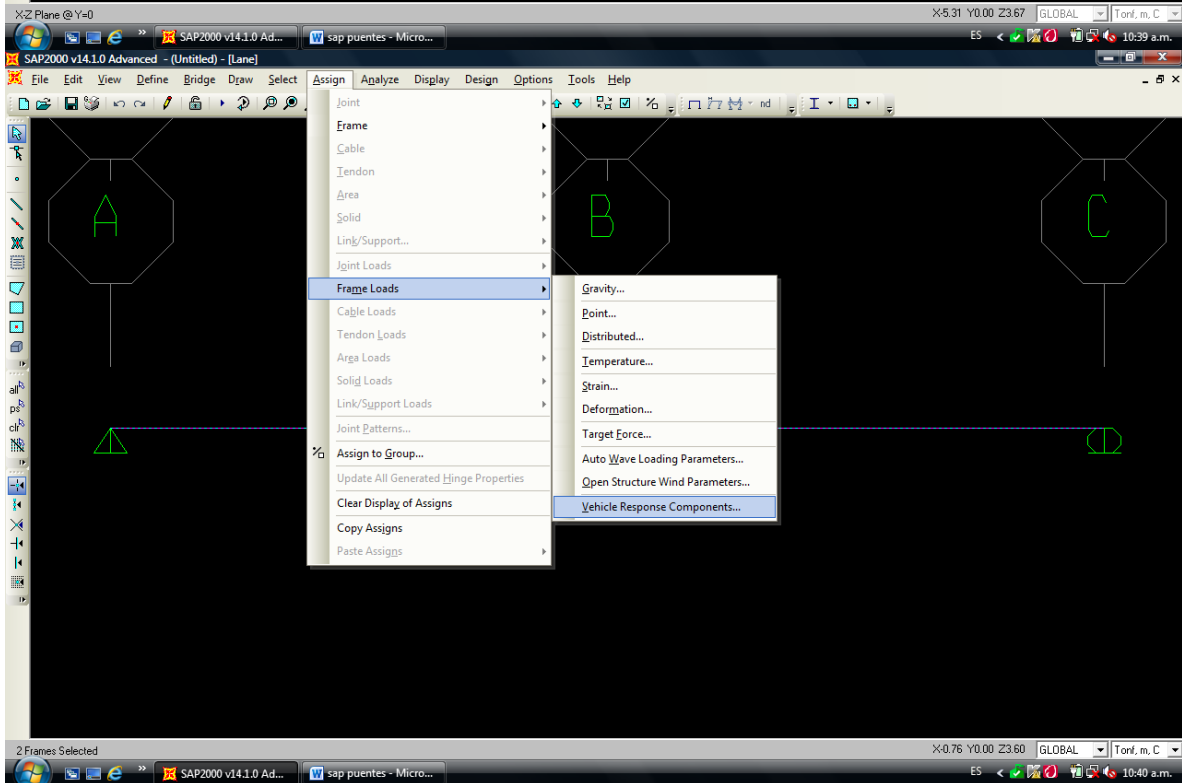
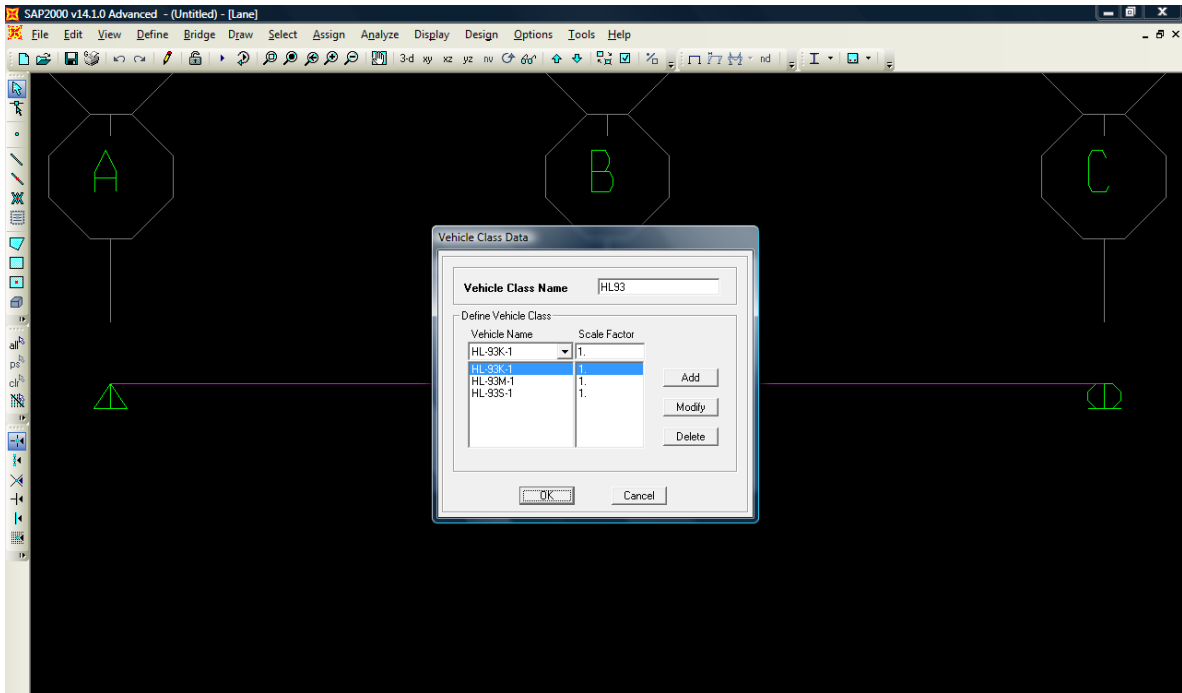


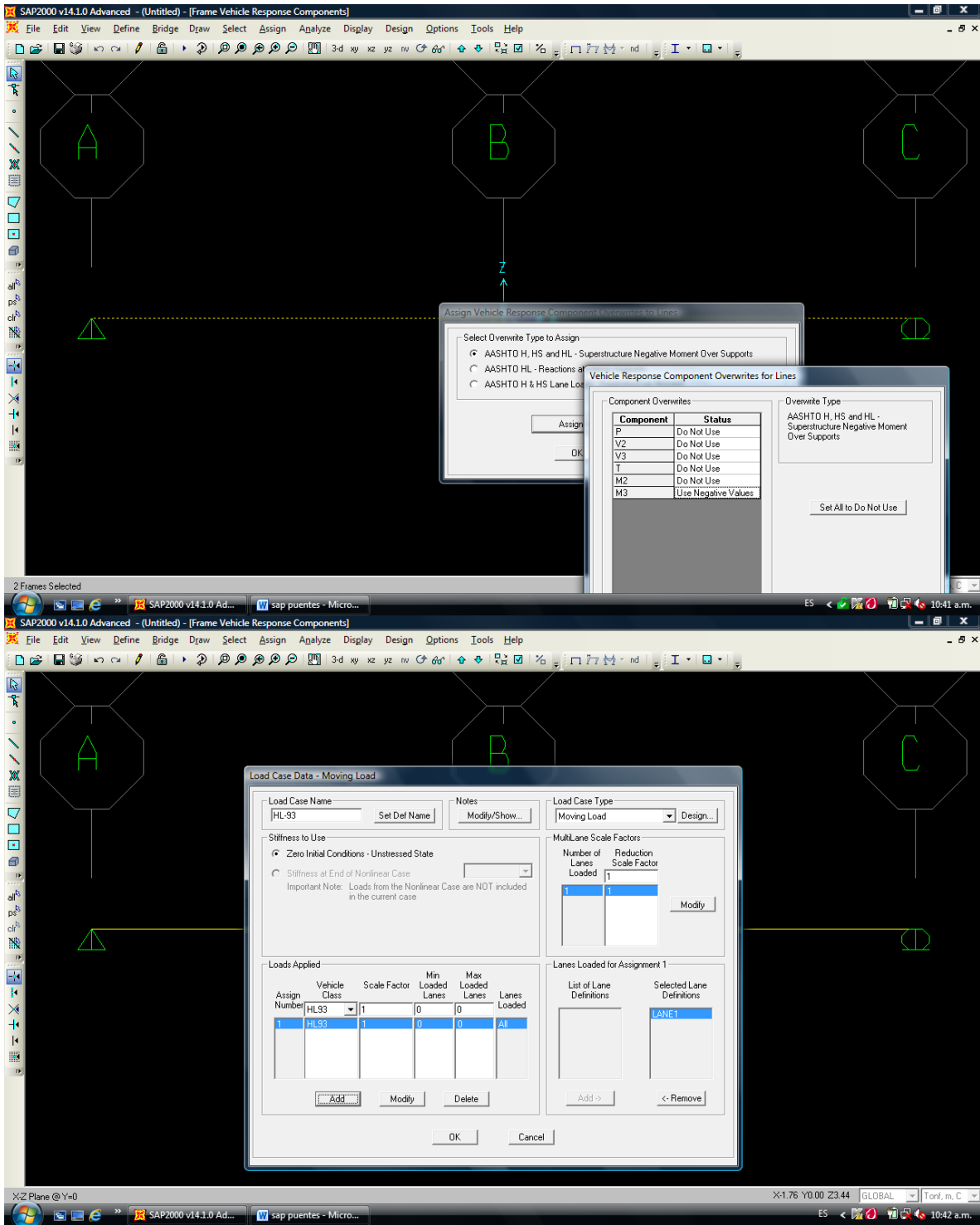


PARA CONSTRUIR UNA ENVOLVENTE EN SAP

OTRO EJERCICIO







Otro ejercicio del libro

